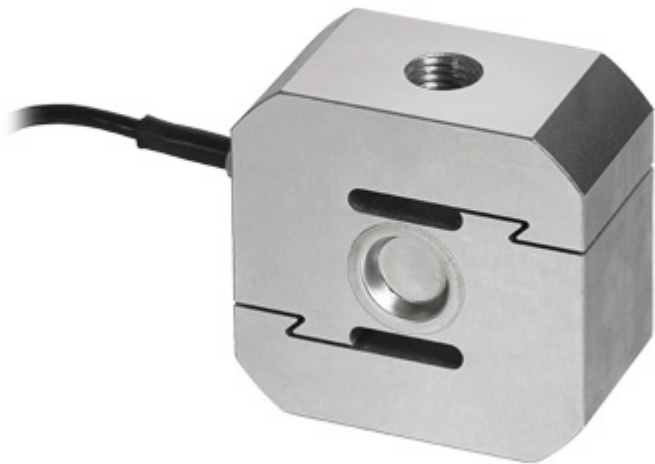


STFC

STFC SERIES TENSION LOAD CELLS



Tension load cells CE-M approved for suspended weighing of hoppers, tanks, etc.

CAPACITIES (kg): 2000, 5000, 10000.

OIML R60. C3 precision class.

Nickel-plated steel. **IP67** protection.

The best solution
for advanced industrial
applications

MAIN FEATURES

- C3 PRECISION CLASS
- NICKEL-PLATED STEEL CONSTRUCTION
- IP67 PROTECTION LEVEL
- MAX. CAPACITIES FROM 2000 TO 10000 kg
- SHIELDED CONNECTION CABLE
- TEST CERTIFICATE AVAILABLE UPON REQUEST

TECHNICAL FEATURES

- Minimum load cell verification interval: $V_{min} = E_{Max} / 10.000$
- Maximum number of verification intervals: $nLC = 3000$
- Combined error: 0,02% of Full Scale Output (F.S.)
- Full Scale Output: 2mV/V +/- 0,1%
- Temperature effect on zero: 0,0013% /°C
- Temperature effect on full scale output: 0,0014% /°C
- Compensated Temperature Range: -10°C/+40°C
- Operating Temperature Range: -20°C/+60°C
- Creep error after 4 hours: 0,03% F.S.
- Maximum tolerated excitation voltage: 10 VDC
- Input Resistance: 1100 Ohm
- Output Resistance: 1000 Ohm
- Zero balance: +/-1% F.S.
- Insulation Resistance: >5000 MOhm
- Safe Overload: 150% F.S.
- Ultimate Overload: 300% F.S.
- 4-wire shielded cable, 5m long, 5mm diameter

Wiring Code

<i>Colour</i>	<i>Function</i>
METAL	SHIELD
GREEN	OUTPUT +
VIOLET	SENSE +
RED	INPUT +
WHITE	OUTPUT -
GREY	SENSE -
BLACK	INPUT -

VERSIONS

Available versions

Codice		Max (kg)
STFC2000		2000
STFC5000		5000
STFC10000		10000



“YOUR WORLDWIDE PARTNER FOR WEIGHING,”

**DINI ARGEO
FRANCE sarl**
France

**DINI ARGEO
GMBH**
Germany

**DINI ARGEO
UK Ltd**
United Kingdom

**DINI ARGEO WEIGHING
INSTRUMENTS Ltd**
China

**DINI ARGEO
OCEANIA**
Australia



COMPANY HEADQUARTERS

Via Della Fisica, 20
41042 Spezzano di Fiorano Modena • Italy
Tel. +39.0536 843418

SERVICE ASSISTANCE

Via Dell'Elettronica, 15
41042 Spezzano di Fiorano Modena • Italy
Tel. +39.0536 921784

SALES AND TECHNICAL ASSISTANCE SERVICE